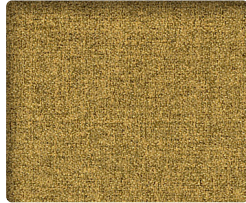


Grade A
MONROE

TURQUOISE
MO34



STRAW
MO47



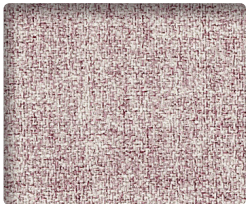
COIN
MO57



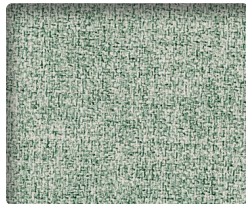
BURLAP
MO605



QUARTZ
MO81



WISTERIA
MO105



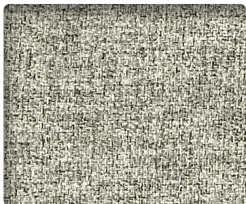
CARIBBEAN
MO31



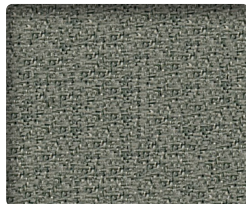
PEWTER
MO9003



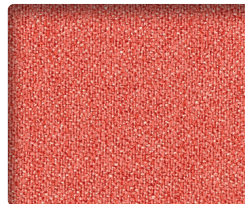
SAGE
MO87



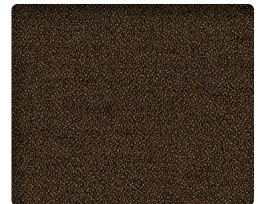
MICA
MO902



STEEL
MO9006



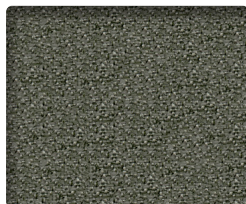
CORAL
MO11



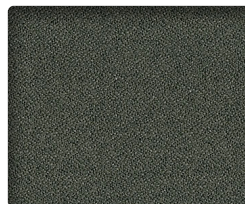
SABLE
MO8009



GRANITE
MO91



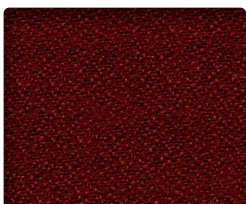
MINERAL
MO86



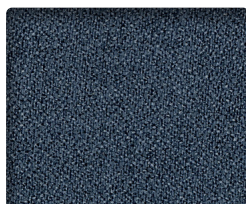
CAPER
MO908



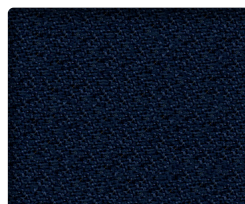
BLACK
MO9009



CHIPOTLE
MO14



INDIGO
MO305



NAVAL
MO308

INFORMATION TECHNIQUE

Patron - Largeur	Composition	Fini	Abrasion (D.F.)	Résistance à la lumière	Code de nettoyage
MONROE - 56" 	100% Polyester	Naturel	165 000	40 Heures Classe 4,5	W

CODE DE NETTOYAGE

- W: Utiliser un savon doux à base d'eau ou une mousse à base d'eau.

TECHNICAL INFORMATION

Width - Pattern	Content	Finish	Abrasion (D.F.)	Lightfastness	Cleaning Code
MONROE - 56" 	100% Polyester	Natural	165 000	40 Hours Class 4,5	W

CLEANING CODE

- W: Use mild soap and water or a water based cleaning agent or water based foam.



6505, Boulevard Métropolitain Est
Saint-Léonard (Quebec)
Canada
H1P 1X9

bouty.com



Échantillons disponibles via Bouty et Adi
Memo samples are available via Bouty and Adi



3450, 1re Rue
Saint-Hubert
(Québec) Canada
J3Y 8Y5

adi-artdesign.com