



# Voilà

This executive office chair is built with the famous ADI Suspension technique on the seat and a unique three-dimensional knit backrest, stretched over a molded aluminum frame, all combined in a pure and elegant style. What more can we say than... Voilà!

**THE AUTHENTIC**



- ERGONOMIC** ✓
- EXECUTIVE** ✓
- CONFERENCE ROOM** ✓
- MULTI-PURPOSE** ✓
- LOUNGE AND** ✓
- WAITING ROOM** ✓
- INTENSIVE USE** ✓
- BARIATRIC**

## TECHNICAL SPECIFICATIONS

- 7 models offered in 3 backrest heights, with the following configurations :
  - 3 ergonomic including 2 available in stool version with footring
  - 4 with four-leg with casters, sled or cantilever frame
- Seat made of steel tubing with high resilience moulded foam and upholstered using the Suspension technique
- Backrest made of polished aluminum and black chrome covered with a knit available in 60 colors
- Black nylon resin or polished aluminum star base with casters equipped with a dust protector
- Side-chair frames made of round metal tubing (7/8" Ø, 14 gauge), finished with black sandex paint or polished chrome
- Options include 3 seat sizes, seat slider, removable lumbar support adjustable in height etc.
- 8 types of mechanisms with choice of gas lifts offering an extended range of seat height adjustment
- Wide choice of fixed and adjustable armrest models



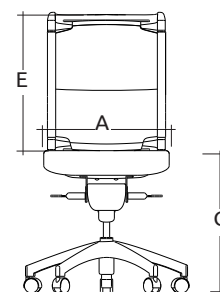
**VO-L**  
A : 20"  
C : 17"- 22"  
E : 22"



**VO-H**  
A : 20"  
C : 17"- 22"  
E : 24"



**VO-E**  
A : 20"  
C : 17"- 22"  
E : 32"



**VO-L-4**  
A : 20"  
C : 18"  
E : 22"



**VO-L-6**  
A : 20"  
C : 18"  
E : 22"



- Not shown above : Models VO-H-4, VO-H-6 with 24" backrest height



3450, 1re Rue  
St-Hubert (Québec) J3Y 8Y5 Canada  
T 450.926.1004 / 800.663.6794  
F 450.926.0013

[adi-artdesign.com](http://adi-artdesign.com)

