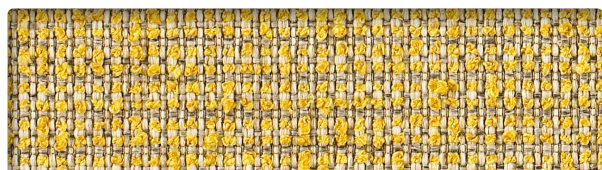
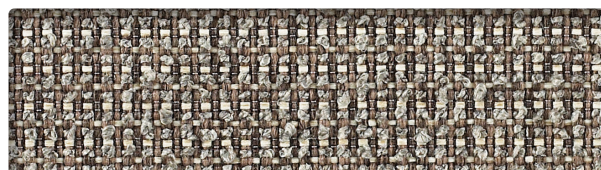


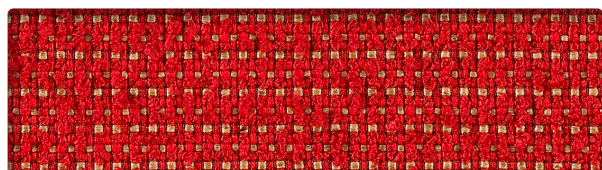
AMBER
PI6867



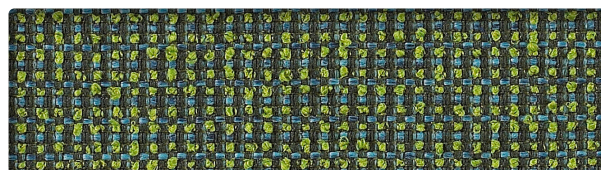
ZEST
PI7054



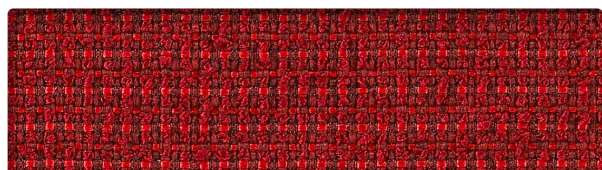
PEWTER
PI7032



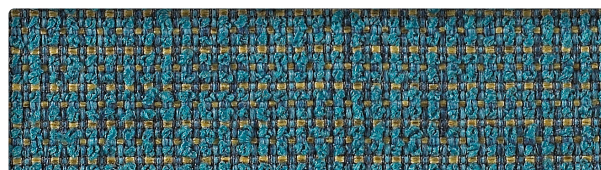
GRANADINE
PI6911



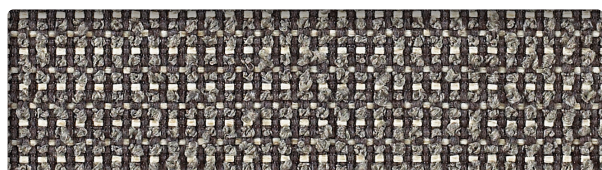
MALACHITE
PI6988



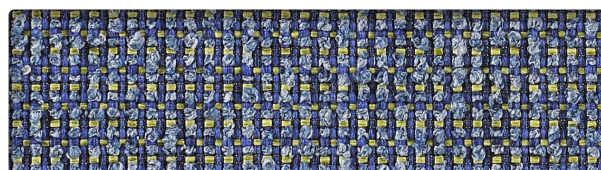
CRIMSON
PI6878



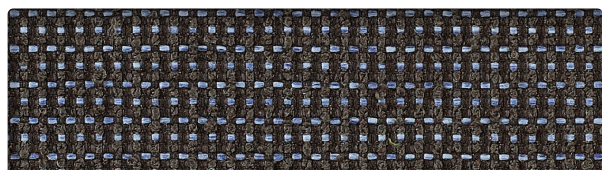
CALYPSO
PI6955



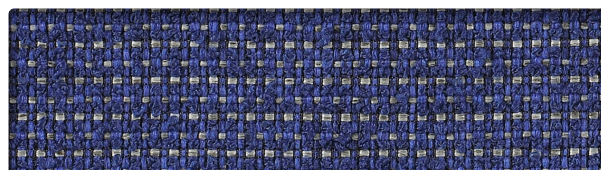
RUNE
PI7010



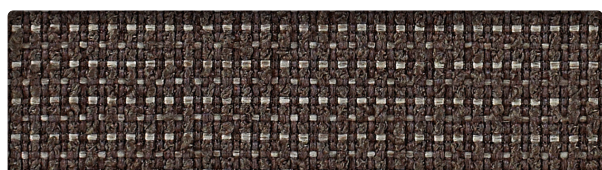
LAKE
PI6933



DUSK
PI6966



YACHT
PI6944




TURRET
PI7021



PEPPER
PI6999

INFORMATION TECHNIQUE


Patron - Largeur	Composition	Finis	Abrasion (D.F.)	Résistance à la lumière	Code de nettoyage
PIP - 55" 	53 % polyester recyclé Repreve®, 47 % polyester Endos en acrylique	-	200 000	40 Heures Classe 4,5	WS

CODE DE NETTOYAGE

- **WS:** Utiliser un agent nettoyant à base d'eau ou de mousse ou un solvant pur et sans eau.

Plusieurs facteurs tels que le type d'utilisation et l'entretien peuvent influencer la durabilité et l'apparence originale. Les résultats Wyzenbeek dépassant 100 000 doubles frottements n'ont pas démontré être un gage de longévité accrue du produit.

TECHNICAL INFORMATION

Width - Pattern	Content	Finish	Abrasion (D.F.)	Lightfastness	Cleaning Code
PIP - 55" 	53 % Repreve® Recycled Polyester, 47 % polyester Acrylic Backing	-	200,000	40 Hours Class 4,5	WS

CLEANING CODE

- **WS:** Use water-based or foam cleaning agent, or pure water-free solvent.

Multiple factors affect fabric durability and appearance retention, including end-user application and proper maintenance. Wyzenbeek results above 100,000 double rubs have not been shown to be an indicator of increased lifespan.



10871, avenue Salk
Montréal-Nord
(Québec) Canada
H1G 6M7

bouty.com

Échantillons disponibles via
Memo samples are available from

MOMENTUM
T E X T I L E S

memosamples.com | 800.366.6839



3450, 1re Rue
Saint-Hubert
(Québec) Canada
J3Y 8Y5

adi-artdesign.com