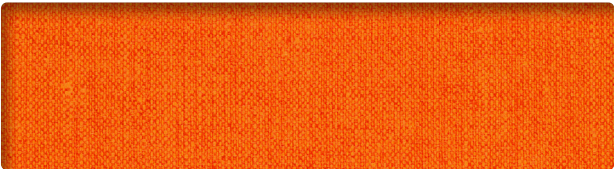




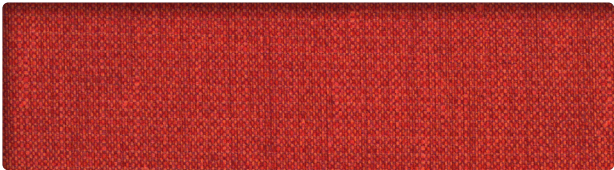
Grade D  
**KEY LARGO**



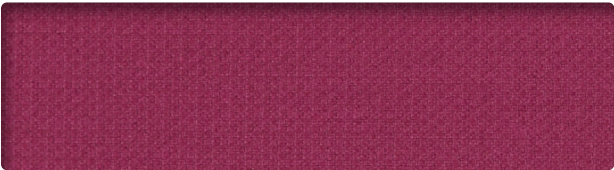
**QUARRY**  
KL026



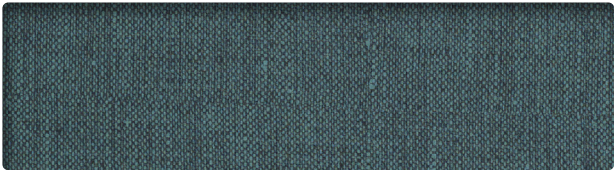
**TANGERINE**  
KL009



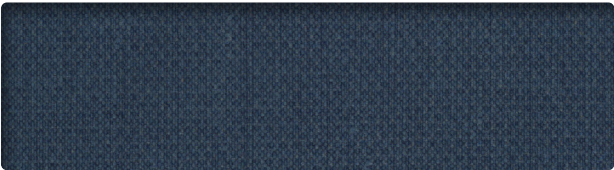
**CAYENNE**  
KL019



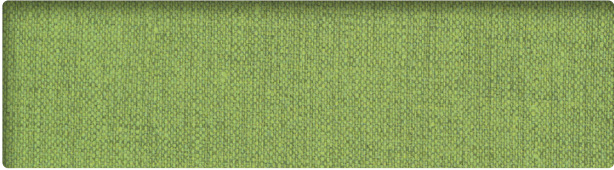
**RASPBERRY**  
KL011



**AEGEAN**  
KL014



**ULTRAMARINE**  
KL004



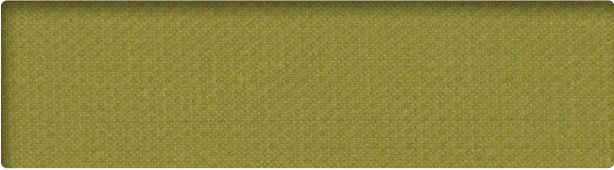
**PALM**  
KL013



**NASSAU**  
KL024



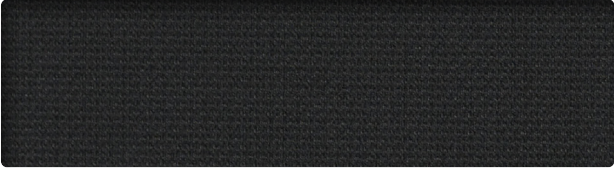
**SANDSTONE**  
KL020



**PEAR**  
KL033




**GRAPHITE**  
KL006



**EBONY**  
KL016

## INFORMATION TECHNIQUE

Patron - Largeur	Composition	Fini	Abrasion (D.F.)	Résistance à la lumière	Code de nettoyage
<b>KEY LARGO - 54"</b> 	86% Vinyle sans Phthalate 14% Polyester à l'endos	Antitache Surface résistante à l'encre	250,000 <sup>^</sup>	650 Heures Classe 4.5	WS, BC, CFC


### CODE DE NETTOYAGE

- **WS:** Utiliser un agent nettoyant à base d'eau ou de mousse.
- **BC:** Préparer une solution contenant 10% d'agent de blanchiment, nettoyer pour un maximum de 10 minutes et rincer rapidement avec de l'eau.
- **CFC:** Veuillez consulter le site web de Mayer pour de plus amples informations.

### INFORMATION ADDITIONNELLE

<sup>^</sup>**Abrasion:** Plusieurs facteurs affectent la durabilité et l'apparence des recouvrements, notamment l'usage et l'entretien du produit. Les résultats de test Wyzenbeek supérieurs à 100.000 double frottements n'ont pas démontré être une mesure fiable de la longévité d'un recouvrement. Veuillez consulter le site web de Mayer pour d'autres spécifications techniques.

## TECHNICAL INFORMATION

Width - Pattern	Content	Finish	Abrasion (D.F.)	Lightfastness	Cleaning Code
<b>KEY LARGO - 54"</b> 	86% Vinyl Phthalate Free face, 14% Polyester backing	Soil & Stain Resistant Top Coat with Ink Resistant Technology	250,000 <sup>^</sup>	650 Heures Classe 4.5	WS, BC, CFC

### CLEANING CODE

- **WS:** Use water-based or foam cleaning agent, or pure water-free solvent.
- **BC: Bleach Cleanable** – 1 part bleach, 9 parts water = 10% bleach, 90% water solution. Do not clean/disinfect fabric for longer than minutes using the 10% bleach solution. Always rinse promptly with clean water after applying the bleach solution. Failure to do so will void any and all warranties.
- **CFC:** Coated Fabrics Cleaning – Refer to Mayer website for complete cleaning info.

### ADDITIONAL INFORMATION

**Abrasion:** Multiple factors affect fabric durability and appearance retention, including end-user application and proper maintenance. Wyzenbeek results above 100,000 double rubs have not been shown to be a reliable indicator of increased fabric lifespan. Specifications: Specifications are correct at the time of printing. Additional specifications are available on our website.



10871, avenue Salk  
Montréal-Nord  
(Québec) Canada  
H1G 6M7

[bouty.com](http://bouty.com)



MAYERFABRICS

TF 800.428.4415



3450, 1re Rue  
Saint-Hubert  
(Québec) Canada  
J3Y 8Y5

[adi-artdesign.com](http://adi-artdesign.com)