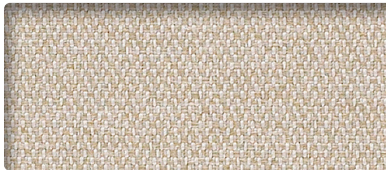


VINE
IN2685



STUCCO
IN2630



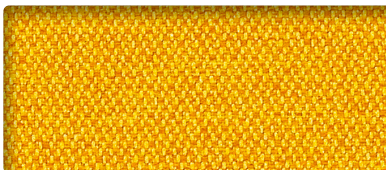
BARLEY
IN2399



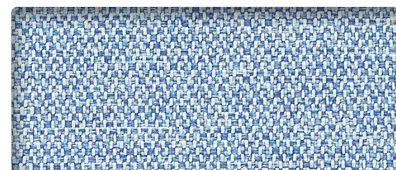
ALUMINUM
IN2366



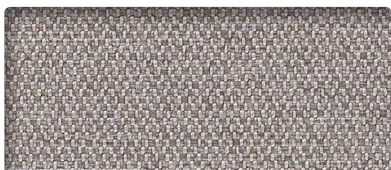
DOVE
IN2443



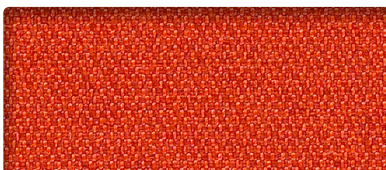
MAIZE
IN5242



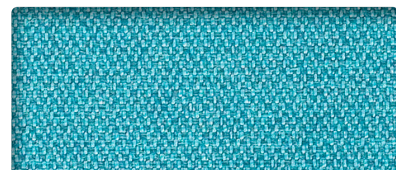
ASTER
IN2377



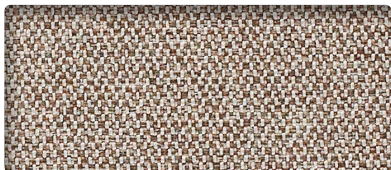
GULL
IN2476



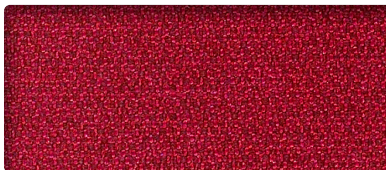
PAPAYA
IN2553



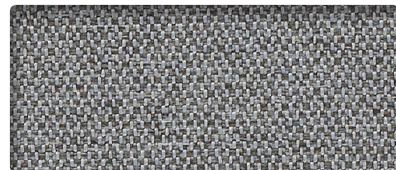
RINSE
IN2597



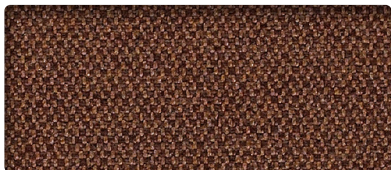
SABLE
IN2619



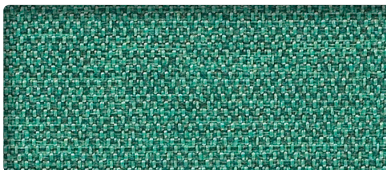
BERRY
IN2410



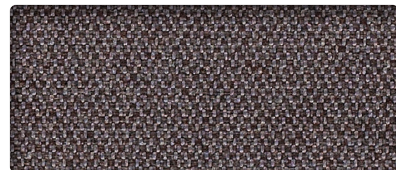
PEWTER
IN2564



TERRAIN
IN2641




ATOLL
IN2388



GRAPHITE
IN2465

INFORMATION TECHNIQUE

Patron - Largeur	Teneur en fibres et endos	Fini	Abrasion (D.F.)	Résistance à la lumière	Code de nettoyage
INFINITY - 57" 	74 % polyester recyclé post-consommation 26 % polyester Endos en acrylique	C-Zero®	200 000	40 Heures Classe 4	WS

CODE DE NETTOYAGE

- **WS:** Utiliser un agent nettoyant à base d'eau ou de mousse ou un solvant pur et sans eau.

Plusieurs facteurs tels que le type d'utilisation et l'entretien peuvent influencer la durabilité et l'apparence originale. Les résultats Wyzenbeek dépassant 100 000 doubles frottements n'ont pas démontré être un gage de longévité accrue du produit.

TECHNICAL INFORMATION

Width - Pattern	Content	Finish	Abrasion (D.F.)	Lightfastness	Cleaning Code
INFINITY - 57" 	74 % Post Consumer Recycled Polyester 26 % Polyester Acrylic Backing	C-Zero®	200 000	40 Hours Class 4	WS

CLEANING CODE

- **WS:** Use water-based or foam cleaning agent, or pure water-free solvent.

Multiple factors affect fabric durability and appearance retention, including end-user application and proper maintenance. Wyzenbeek results above 100,000 double rubs have not been shown to be an indicator of increased lifespan.



10871, avenue Salk
Montréal-Nord
(Québec) Canada
H1G 6M7

bouty.com

Échantillons disponibles via
Memo samples are available from

MOMENTUM
T E X T I L E S

memosamples.com | 800.366.6839



3450, 1re Rue
Saint-Hubert
(Québec) Canada
J3Y 8Y5

adi-artdesign.com