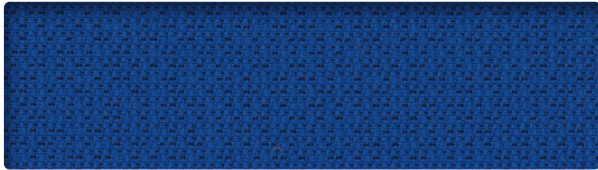


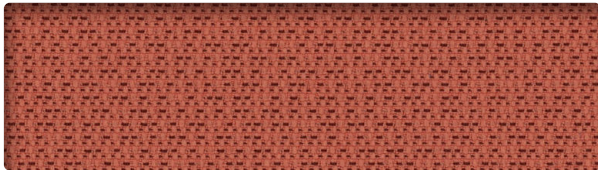
Grade B  
SHIFT



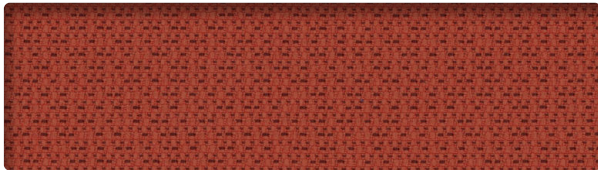
**ANTHRACITE**  
SH0926



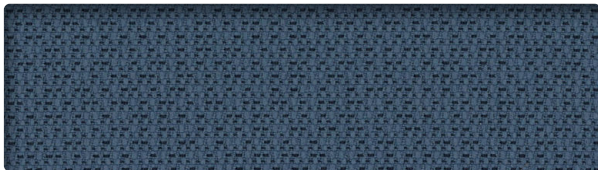
**BLUENOTE**  
SH0939



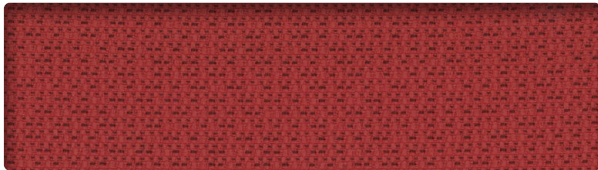
**BLUSHING**  
SH0922



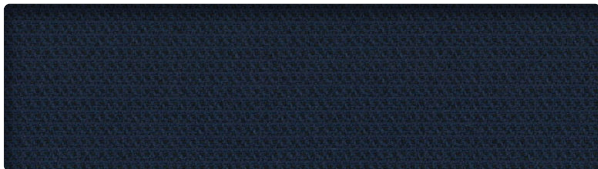
**FIRECLAY**  
SH0923



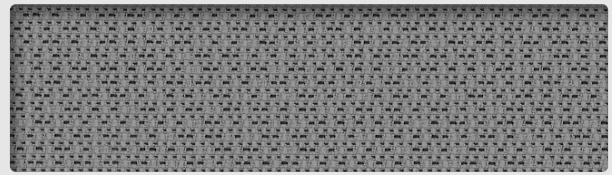
**FJORD**  
SH0940



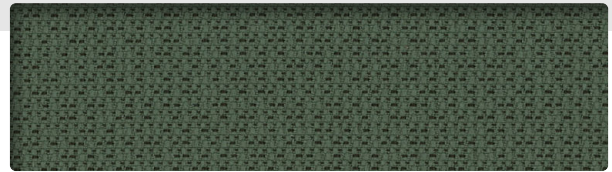
**LADYBUG**  
SH0946



**MIDNIGHT**  
SH0924



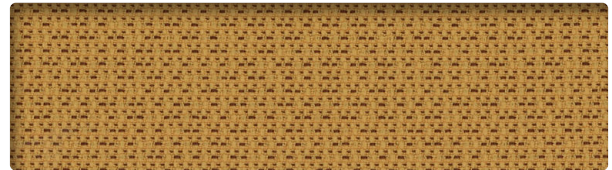
**NIMBUS**  
SH0925



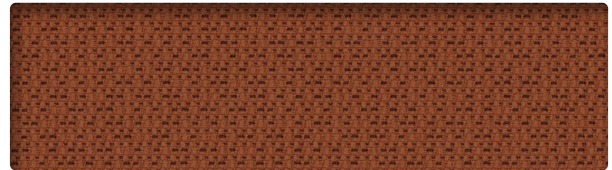
**PASTORAL**  
SH0941



**PEBBLES**  
SH0944



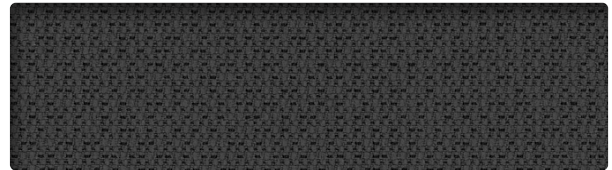
**SAUTERNE**  
SH0921



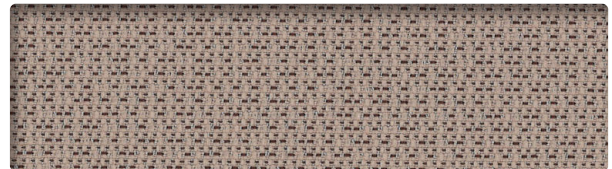
**SIENNA**  
SH0945



**STEEL**  
SH0938



**UMBRA**  
SH0937



**VAPOR**  
SH0943

## INFORMATION TECHNIQUE


Patron - Largeur	Composition	Finis	Abrasion (D.F.)	Résistance à la lumière	Code de nettoyage
<b>QUADRILLE- 54"</b> 	100 % polyester (100 % recyclé, biodégradable)	Naturel	100 000	40 Heures Classe 4	WS

### CODE DE NETTOYAGE

- **WS:** Utiliser un agent nettoyant à base d'eau ou de mousse ou un solvant pur et sans eau.

Plusieurs facteurs tels que le type d'utilisation et l'entretien peuvent influencer la durabilité et l'apparence originale. Les résultats Wyzenbeek dépassant 100 000 doubles frottements ne sont pas un gage de longévité du produit.

## TECHNICAL INFORMATION

Width - Pattern	Content	Finish	Abrasion (D.F.)	Lightfastness	Cleaning Code
<b>QUADRILLE- 54"</b> 	100 % Polyester (100 % Recycled, biodegradable)	Naturel	100,000	40 Hours Class 4	WS

### CLEANING CODE

- **WS:** Use water-based or foam cleaning agent, or pure water-free solvent.

Multiple factors affect fabric durability and appearance retention, including end-user application and proper maintenance. Wyzenbeek results above 100,000 double rubs have not been shown to be an indicator of increased lifespan.



10871, avenue Salk  
Montréal-Nord  
(Québec) Canada  
H1G 6M7

[bouty.com](http://bouty.com)

Échantillons disponibles via  
Memo samples are available from



For more information contact Sales Service:  
800-544-0200



3450, 1re Rue  
Saint-Hubert  
(Québec) Canada  
J3Y 8Y5

[adi-artdesign.com](http://adi-artdesign.com)