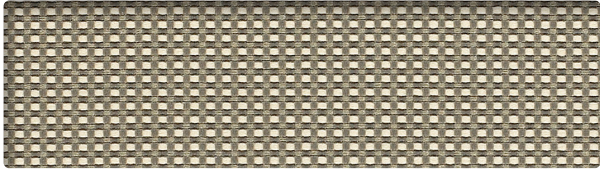
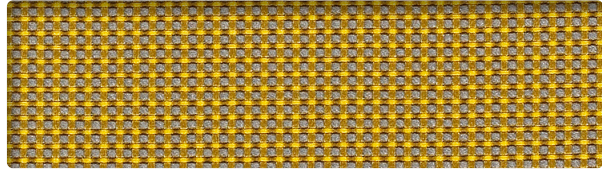


Grade B
GRID

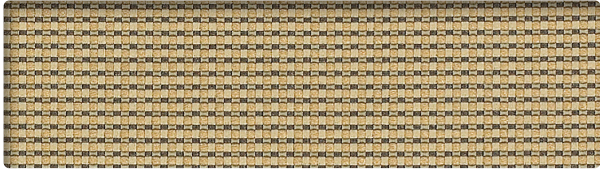
SCARLET
GR2698



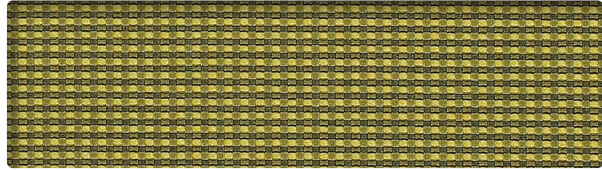
CHROME
GR2632



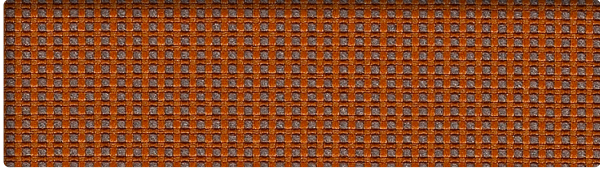
SUNBEAM
GR2764



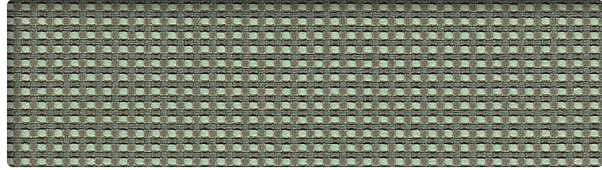
KHAKI
GR2753



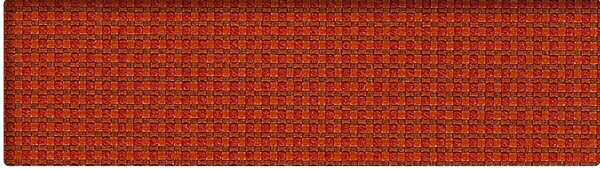
APPLE
GR2709



EMBER
GR2731



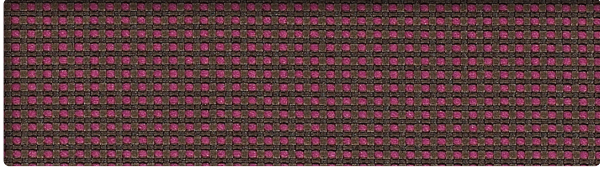
GLACIER
GR2720



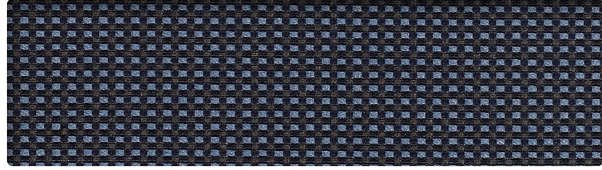
SCARLET
GR2698



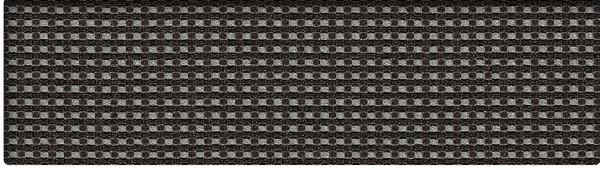
SURF
GR2665



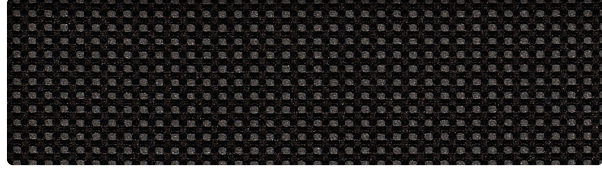
ORCHID
GR2687



INDIGO
GR2676



FLINT
GR2654



JET
GR2643

INFORMATION TECHNIQUE


Patron - Largeur	Composition	Finis	Abrasion (D.F.)	Résistance à la lumière	Code de nettoyage
GRID - 54" 	64 % polyester recyclé post consommation Repreve® 36 % polyester recyclé	Acrylique	160 000	40 Heures Classe 4	WS

CODE DE NETTOYAGE

- **WS:** Utiliser un agent nettoyant à base d'eau ou de mousse ou un solvant pur et sans eau.

Plusieurs facteurs tels que le type d'utilisation et l'entretien peuvent influencer la durabilité et l'apparence originale. Les résultats Wyzenbeek dépassant 100 000 doubles frottements n'ont pas démontré être un gage de longévité accrue du produit.

TECHNICAL INFORMATION

Width - Pattern	Content	Finish	Abrasion (D.F.)	Lightfastness	Cleaning Code
GRID - 54" 	64 % Repreve® Post Consumer Recycled Polyester, 36 % polyester	Acrylic	160 000	40 Hours Class 4	WS

CLEANING CODE

- **WS:** Use water-based or foam cleaning agent, or pure water-free solvent.

Multiple factors affect fabric durability and appearance retention, including end-user application and proper maintenance. Wyzenbeek results above 100,000 double rubs have not been shown to be an indicator of increased lifespan.



10871, avenue Salk
Montréal-Nord
(Québec) Canada
H1G 6M7

bouty.com

Échantillons disponibles via
Memo samples are available from

MOMENTUM
T E X T I L E S

memosamples.com | 800.366.6839



3450, 1re Rue
Saint-Hubert
(Québec) Canada
J3Y 8Y5

adi-artdesign.com