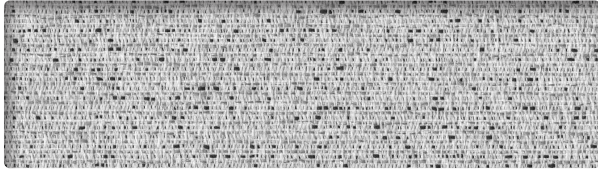


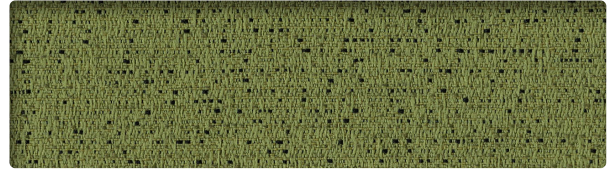
Grade A
PEBBLE



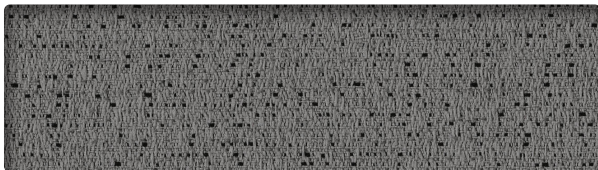
PARAKOLEA
1513



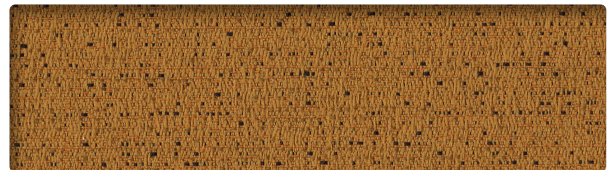
MABUA
1506



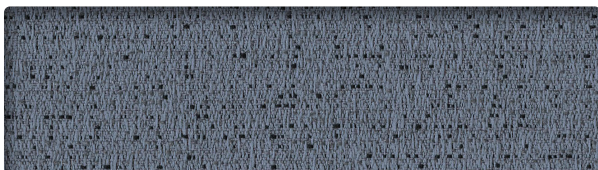
NEGRIL
1512



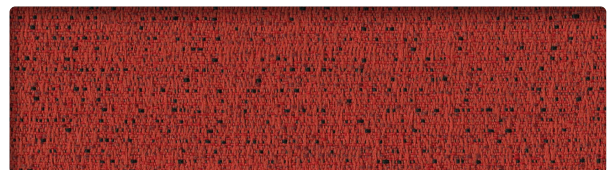
LANGKAWI
1518



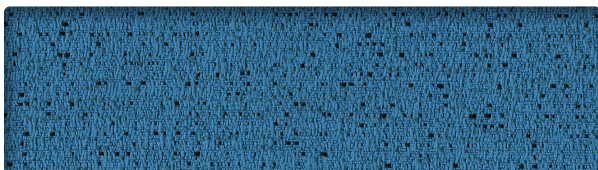
CHESIL
1514



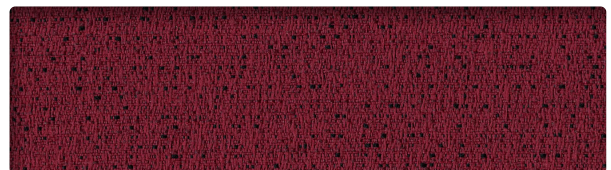
NICE
1501



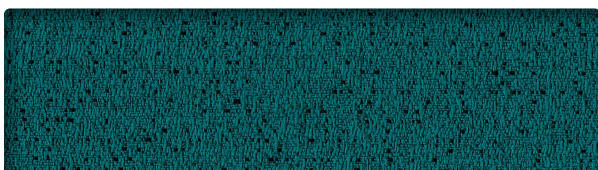
RED BEACH
1410



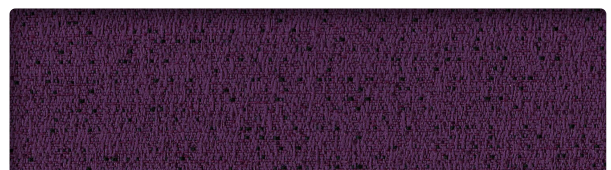
WAIKIKI
1517



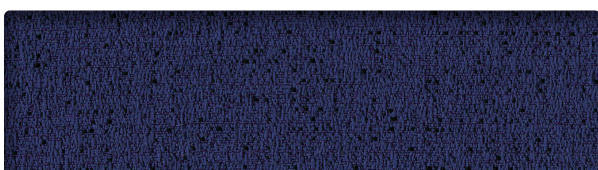
COPACABANA
1516



SURFER'S PARADISE
1511



SOUTH BEACH
1504



SIESTA
1503



TENERIFE
1508

INFORMATION TECHNIQUE


Patron - Largeur	Composition	Finis	Abrasion (D.F.)	Résistance à la lumière	Code de nettoyage
PEBBLE - 54" 	100 % polyester (10,3 % recyclé)	Antitache	100 000	40 Heures Classe 4,5	WS

CODE DE NETTOYAGE

- **WS:** Utiliser un agent nettoyant à base d'eau ou de mousse ou un solvant pur et sans eau.

Plusieurs facteurs tels que le type d'utilisation et l'entretien peuvent influencer la durabilité et l'apparence originale. Les résultats Wyzenbeek dépassant 100 000 doubles frottements ne sont pas un gage de longévité du produit.

TECHNICAL INFORMATION

Width - Pattern	Content	Finish	Abrasion (D.F.)	Lightfastness	Cleaning Code
PEBBLE - 54" 	100 % Polyester (10,3 % Recycled)	Soil and stain repellent	100,000	40 Hours Class 4,5	WS

CLEANING CODE

- **WS:** Use water-based or foam cleaning agent, or pure water-free solvent.

Multiple factors affect fabric durability and appearance retention, including end-user application and proper maintenance. Wyzenbeek results above 100,000 double rubs have not been shown to be an indicator of increased lifespan.



10871, avenue Salk
Montréal-Nord
(Québec) Canada
H1G 6M7

bouty.com

Échantillons disponibles via
Memo samples are available from



For more information contact Sales Service:
800-544-0200



3450, 1re Rue
Saint-Hubert
(Québec) Canada
J3Y 8Y5

adi-artdesign.com