



# Ace

Ace presents a very contemporary and slick design that will nicely integrate any work and meeting environments. Ergonomically, the mesh backrest as well as the lumbar support are both adjustable and offer comfort without compromise. Resulting from a renewed design process at ADI, Ace offers an extremely competitive price/quality ratio that will surprise you.

**WINNING COMBINATION**

**ADI**

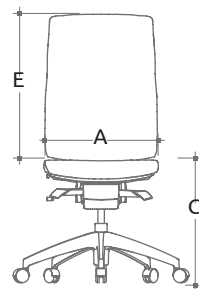
**ERGONOMIC** ✓  
EXECUTIVE  
**CONFERENCE ROOM** ✓  
MULTI-PURPOSE  
LOUNGE AND  
WAITING ROOM  
INTENSIVE USE  
BARIATRIC

## TECHNICAL SPECIFICATIONS

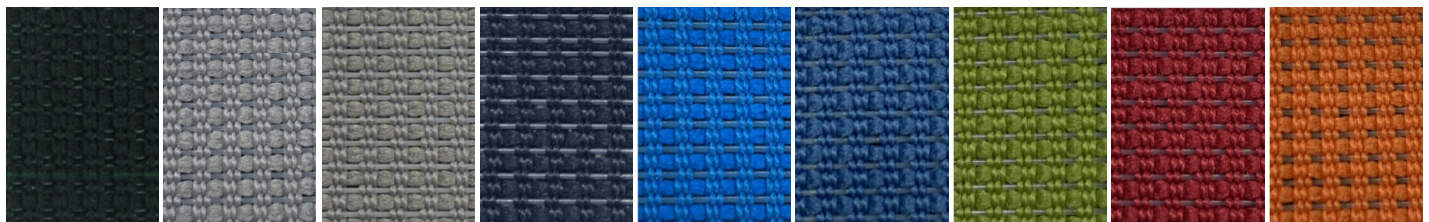
- Seat made of plywood and high resilience polyurethane moulded foam
- Backrest with ratchet and lumbar support both height adjustable
- Standard configuration with grade A black fabric seat and black mesh backrest
- All other seat upholstery materials are available with upcharge
- Choice of 8 additional mesh colors
- 2 types of mechanisms with choice of gas lifts offering an extended range of height adjustment
- 2 ergonomic armrest options allowing for multiple adjustments
- Black nylon resin or polished aluminum star base with casters equipped with a dust protector
- 5-year warranty



**AC-H**  
**A : 18<sup>1/2</sup>"**  
**C : 17"- 22"**  
**E : 24<sup>1/2</sup>"**



## MESH COLORS



Black - MN

Grey - MG

Nickel - MK

Navy - MM

Electric - ME

Ocean - MC

Green - MV

Red - MR

Orange - MO



3450, 1re Rue  
 St-Hubert (Québec) J3Y 8Y5 Canada  
 T 450.926.1004 / 800.663.6794  
 F 450.926.0013

[adi-artdesign.com](http://adi-artdesign.com)

